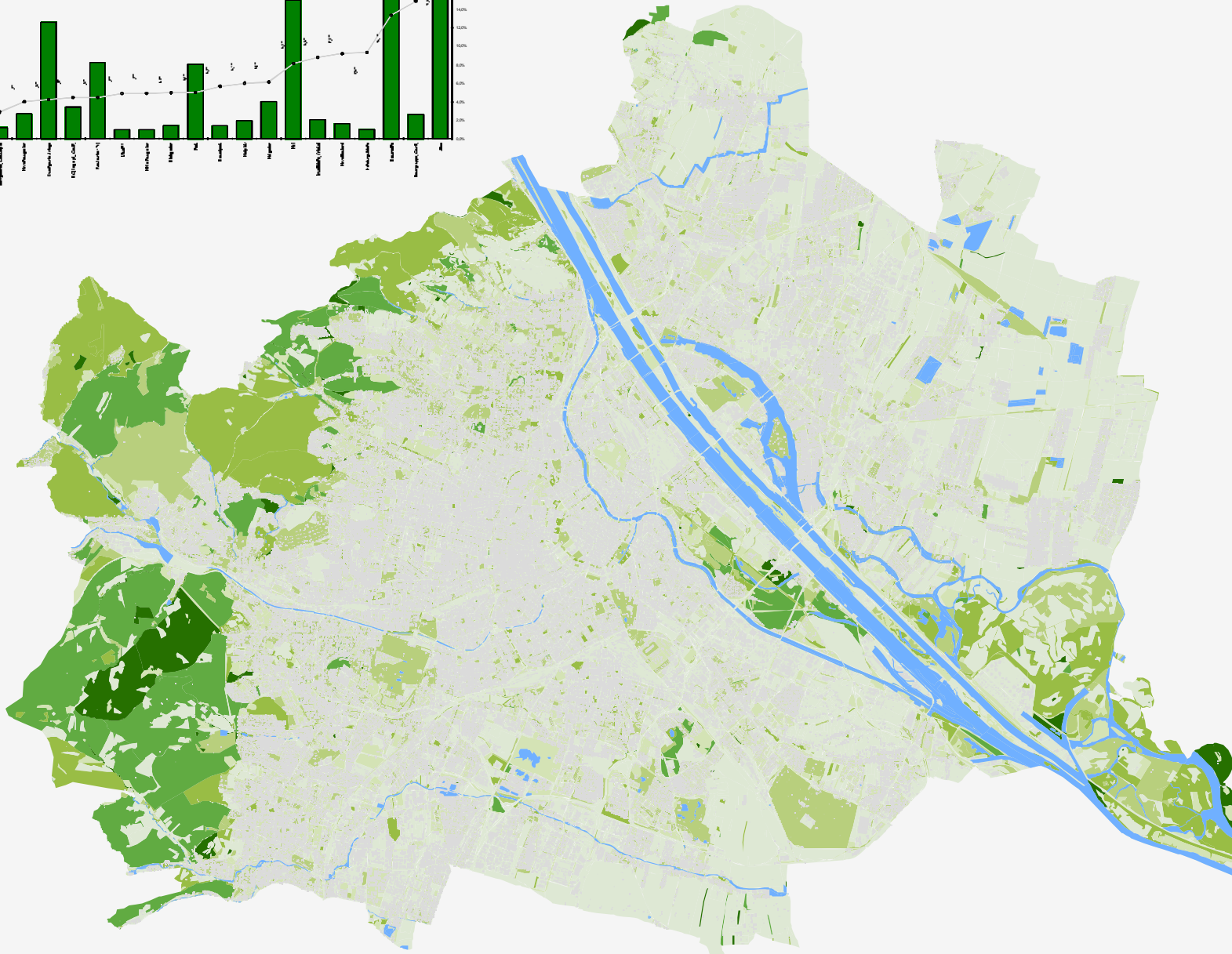
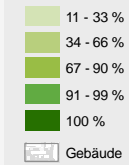


Figure 1 is a bar chart showing the distribution of the number of publications per year (1990-2010) for the 10 most cited articles. The x-axis lists the articles, and the y-axis shows the number of publications (0 to 2000). The bars represent the number of publications per year, and the line graph shows the cumulative number of publications over time. The articles are: 1. 'The Role of the Teacher', 2. 'The Role of the Teacher', 3. 'The Role of the Teacher', 4. 'The Role of the Teacher', 5. 'The Role of the Teacher', 6. 'The Role of the Teacher', 7. 'The Role of the Teacher', 8. 'The Role of the Teacher', 9. 'The Role of the Teacher', 10. 'The Role of the Teacher'.



0 - 10 %



BEZ	Arabs/Roma	in %	Sum in KZs	in %	Sum in KZs	in %	Do and what is to be done	
							for Gov	for our Str.
European South	4.171	2.3%	63.4	15.2%	179	1.5%	11	5.1
Latvian and Lith.	1.152	0.2%	97	2.4%	45	0.3%	41	0.1
Polish	12.233	6.7%	1,000	25.0%	1,000	7.7%	17	20
Wekos	3.311	1.6%	9.4	2.3%	20	0.0%	18	0.1
Magyarok	1.170	1.9%	281	8.8%	677	5.1%	55	10
Yugoslavs	1.393	0.7%	100	2.5%	100	0.7%	48	0.5
Norviks	2.082	1.2%	260	11.2%	49	2.4%	13	0.5
Russians	1.405	0.9%	225	13.3%	31	1.9%	15	1.3
Armenians	1.384	0.7%	126	12.2%	74	3.3%	19	0.3
Finns	1.172	0.6%	100	10.0%	10	0.6%	0	0
Swedish	7.961	4.1%	670	9.1%	21	2.9%	0	22
Medians	1.633	3.7%	72	5.6%	20	0.3%	0	0
Portugals	1.171	0.6%	22	2.0%	0	0.0%	0	27
Poles	11.874	6.3%	927	23.8%	316	2.3%	10	22
Roths	6.444	3.3%	400	9.1%	7	0.0%	0	15
Belaruss	3.419	4.7%	297	9.2%	83	1.6%	0	22
Yugoslavs	4.580	2.4%	346	11.6%	16	0.6%	0	0
Whites	9.145	5.1%	758	8.7%	21	2.5%	0	0
Dobins	14.552	9.1%	1,572	10.0%	66	4.0%	0	35
Yugoslavs	9.889	5.7%	920	9.2%	15	0.5%	17	18
Yugoslavs	8.889	4.8%	82	9.7%	1	0.0%	0	23
Donmishs	8.070	4.7%	504	9.1%	252	3.1%	0	18
Finns	5.548	2.9%	117	2.2%	14	0.8%	0	28
Gov metropolitan	170.800	100.0%	133,775	7.5%	2,974	1.7%	0	28

Übersicht über die Baumverteilung, deren Zustand und die Baumdichte auf Bezirksebene.
KZ3 = Kronenzustand 3, KZ4 = Kronenzustand 4. Die eingeklammerten Werte der
Baumdichte je ha sind nur bedingt aussagekräftig, da diese Bezirke nicht zur Gänze im dicht
bebauten Stadtgebiet liegen und hier nicht alle Bäume einzeln gezählt wurden.



(c) Magistrat Wien
 Basisdaten: Stadtvermessung Wien MA41
 Fachdaten: Wiener Umweltschutzabteilung MA22
 Kartierung, Kartografie und Layout:
 Revital ZT GmbH / freiland Umweltconsulting ZT GmbH
 Kartierungsrundlage: Infrarot-Luftbild, Befliegung 2005



1:50.000

